

ACCESS

Railroad Information

Tokyo	Morioka	Kakunodate	Omagari
Komachi, Akita-Shinkansen (Super Express) approximately 3hrs.5min.			
Tokyo	Yamagata	Shinjo	Omagari
Yamagata-Shinkansen (Super Express) approximately 3 hrs. 35 min. Ou Line approximately 2 hrs.			
Akita	Omagari		
Komachi, Akita-Shinkansen (Super Express) approximately 30 min.			

Road Information

Sendai Minami (South) Exit	Kitakami Junction	Yokote Exit	Omagari Exit
Tohoku Expressway approximately 80 min. Akita Expressway approximately 30 min.			
Akita Station	Akita Minami (South) Exit	Omagari Exit	
Public Road approximately 20 min. Akita Expressway approximately 30 min.			
Morioka	Daisen		
Route 46-Route 105 approximately 120 min.			
Akita Airport	Daisen		
Via Route 13 approximately 60 min. Using Akita Expressway approximately 40 min.			
TOKYO	Omagari Bus Terminal		
Long-Distance Night Bus approximately 9 hrs.			

Flight Information

Tokyo (Haneda)	Daisen
approximately 65 min.	Approximately 60 min. by Drive or Airport-Liner (Airport-Express)
Nagoya	
approximately 70 min.	Approximately 40 min. by Limousine Bus
Osaka (Itami)	
approximately 80 min.	Akita Station
Sapporo (Shin-Chitose)	
approximately 55 min.	Approximately 30 min. by Komachi, Akita Shinkansen (Super Express)
Korea (Inchon)	Omigari Station
Currently not in service	
approximately 2hrs.30 min.	

Inquiries about Daisen Areas

Omigari Area
Daisen City, Agriculture, Forestry and Commerce, Industry Department / Commerce, Industry and Tourist Division
☎0187-63-1111

Kamioka Area
Kamioka Branch, Citizens Service Division
☎0187-72-2111

Nishi-Senboku Area
Nishi-Senboku Branch, Citizens Service Division
☎0187-75-1111

Nakasen Area
Nakasen Branch, Citizens Service Division
☎0187-56-2111

Kyowa Area
Kyowa Branch, Citizens Service Division
☎018-892-2111

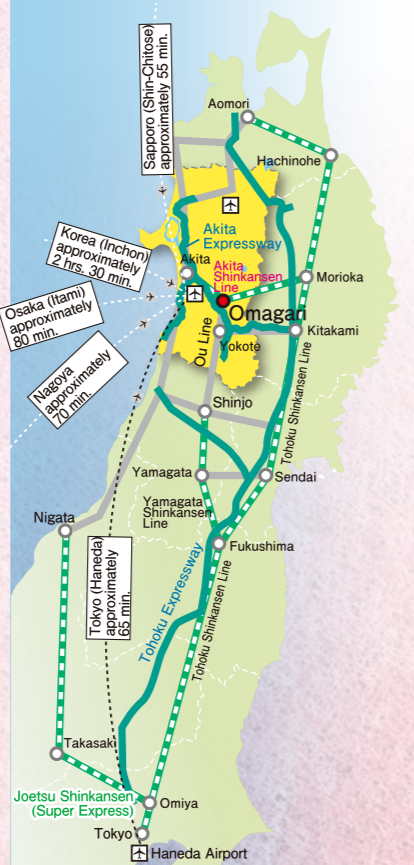
Nangai Area
Nangai Branch, Citizens Service Division
☎0187-74-2111

Senboku Area
Senboku Branch, Citizens Service Division
☎0187-63-3003

Ota Area
Ota Branch, Citizens Service Division
☎0187-88-1111

Daisen Tourist Information Center "GRAND PORT"
6-5 Omigari Tori-Machi, Daisen City, Akita 014-0027
☎0187-86-0888 (Located in JR Station)

Daisen City Tourism & Local Products Association
18-5 Omigari Nakadori-Machi, Daisen City, Akita 014-0024
☎0187-88-8481



Daisen City, Economy and, Industry Department / Commerce, Tourism and Exchange Division
1-1 Omigari Hanazono-Cho, Daisen City, Akita 014-8601
☎0187-63-1111(代)
<http://www.city.daisen.akita.jp/>
Eight municipalities (Omigari City, Kamioka Town, Nishi-Senboku Town, Nakasen Town, Kyowa-Town Nangai Village, Senboku Town, Ota Town) were incorporated as Daisen City in 2005

TRAVEL GUIDE TO DAISEN CITY



The Mascot Character of Daisen City
"Marubi-chan"

HERE LIES THE LANDSCAPE OF THE HEART OF JAPAN



Daisen City, Akita Prefecture

OMAGARI'S FIREWORKS



30cm in diameter fireworks
-Warimono category
(Chrysanthemum and peony types)



30cm in diameter fireworks- Freestyle category

Map on last page / D-3

August Omagari National Fireworks Competition (Omagari's Fireworks)

The best pyrotechnists are chosen from all over Japan to compete for the No.1 fireworks artist title in the Omagari National Fireworks Competition. The pyrotechnists create each and every firework ball with all their souls by their own hands for this competition, which is the most influential fireworks event across Japan. The viewing site is situated along a river with mountain views in the background, maximising the powerfulness of sound and lights of the fireworks.

(Date: Last Saturday of every August)



Creative Category



Pyrotechnists of Daisen City

Daisen-the city where fireworks are set off every month.

- January / Countdown Fireworks
- February / Ota Fire Festival
- March / Collection of New Fireworks Creations
- April / Amarime Sakura Fireworks Viewing
- May / Gathering of Fireworks Critics
- June / Naraoka Sanaburi Sake Fireworks
- July / Omagari Nursing School's Tanabata Fireworks
- July / Hanabi-dori Shopping Street Tabanata Fireworks
- July / Kyowa Tanabata Fireworks
- August / Furusato Nishisen Festival
- August / Semboku Saika Festival
- August / Donpan Festival
- September / Kamioka Nangai Fireworks Competition
- October / Omagari's Fireworks of The Chapter Autumn
- October / Yotsuya Festival
- November / All Japan Zangetsu Fireworks Parachute Catching Competition
- December / Illumination Fireworks of Southern Omagari

Map on last page / D-3



Map on last page / D-2

March
Collection of New
Fireworks Creations



Map on last page / D-2

June
Naraoka Sanaburi Sake
Fireworks



Map on last page / D-3

July
Hanabi-dori Shopping Street
Tabanata Fireworks



Map on last page / A-2

September
Kamioka Nangai Fireworks



Map on last page / D-3

October
Omagari's Fireworks of
The Chapter Autumn



Map on last page / D-2

November
All Japan Zangetsu Fireworks
Artist Championship



TEL.0187-68-2625



TEL.0187-72-2277



TEL.0187-72-2205



TEL.0187-63-2848



TEL.0187-66-1612

Vigour, breathtaking force, leisurely magical



Map on last page / C-2

National Important Intangible Folk Cultural Asset: Kariwano Great Tug-of-war

Every 10th of February

The great rope is composed of two ropes, the Ozuna (male rope), which is 64 metres in length and the Mezuna (female rope), 50 metres. The two ropes are tied up and are pulled by roughly 6000 people in the freezing cold winter night of February 10th.



Map on last page / C-4

Yasaka Shrine Bonden Festival

Mid-January



Map on last page / D-4

Hotta-no-saku Winter Festival

Every 3rd Saturday of February



Map on last page / D-3

Toriko-no-mai Kagura Performance

15th of February



Map on last page / D-3

Omagari Tug-of-war

15th of February



Map on last page / C-4

Oshikiri Hiburi Kamakura Festival

Mid-February



Map on last page / D-3

Dakerokusho Shrine Bonden Festival

End of March



Map on last page / D-3

Kashima Nagashi

End of June



Map on last page / D-4

Saika Semboku Summer Festival

15th of August



Map on last page / C-4

Donpan Festival

16th of August



Map on last page / E-3

Kakumagawa Bon Festival Dance

16th of August



Map on last page / D-3

Summer Festival Omagari

Every 3rd Sunday of August



Map on last page / C-4

Higashi-nagano Sasara Dance

Mid-August



Map on last page / D-2

Hachiman Shrine Festival

15th of September

Map on last page / D-3

River-crossing Bonden Festival

11th of February

Men carrying colourful Bonden(flag buoys) go from house to house offering their blessings, then take the river boat to cross the Omono River. From there the men climb up to the top of Mount Izu to the shrine and give their offerings in order to complete the ritual. Even though there are several Bonden offering rituals, the river-crossing Bonden only takes place in Daisen City.



Map on last page / C-5

Ota Fire Festival

Every 3rd Saturday of February





Map on last page / D-4

National Scenic Beauty of Japan 'Former Ikeda Family Gardens'

Formerly owned by one of the three biggest landlords of the Tohoku region, the Former Ikeda Family Gardens were built surrounding a pond. The geographic size of the gardens is 42,000m², roughly the size of Tokyo Dome. The gardens are home to Japan's largest three-legged stone lantern, which is 4 metre tall and 4 metre wide.

Fresh Impressions amongst Ancient Ambience



Map on last page / D-4

National Site of Scenic Beauty 'Former Ikeda Branch Family Gardens'

The gardens are located approx. 3km east-northeast of the Ikeda Family Gardens. Same as the main branch, the landscapes of the gardens are drawn after the shape of the family crest of the Ikeda family, which is shaped like a hexagon. The gardens are hidden gems for autumn leaf viewing.



Map on last page / D-4

National Historical Site Hotta no Saku (The Ancient Wall of Hotta)

The Hotta no Saku is said to be a government building built in early Heian period (784-967). With an appointment, a tour guide called the 'Saku no Annai-nin' will take you around and provide you with more information on the history of the site.



Map on last page / B-1

The spiritual Karamatsu 'Norakuden'

This is the only full-fledged Noh theatre in all of Akita Prefecture. It is modeled after Nishi Honganji's Kita Noh Theatre in Kyoto, and is regularly scheduled with Noh performances.



Map on last page / B-1



Map on last page / B-1

Karamatsu-yama Amatsuhi-no-miya Shrine

Since ancient time, people having been praying at the shrine for safe childbirth and fertility. It is said to be a 'power spot' which gives its visitors peace of mind and solace.



Map on last page / B-1

Main hall of Karamatsu Shrine



Map on last page / D-3

Suwa Shrine



Map on last page / C-4

Sui Shrine

This bronze mirror of the 11th century is the only national treasure in the Akita Prefecture. The mirror is engraved with a thousand-armed Kannon surrounded by eight attendants and others. A replica of the statue is being exhibited at the Nakasen Civic Centre-Donparu.



Map on last page / D-3

Yakushi (the healing Buddha) Shrine



Following Footsteps of the Past

Map on last page / C-2

Kurashi no Rekishikan (Folklore Museum)

The Mineyoshikawa Elementary School, which was closed down in 2008, has been converted into a folklore museum which displays a collection approx. 4000 items.



Map on last page / D-4

Magari-ya 'Mizuho's Home'

This Magariya style of houses can rarely be seen today. This facility was restored and in the Doma (earth floor) area of the house visitors are given the opportunity to experience pounding rice cake using mortar and pounder.



Map on last page / C-5

Red Japanese Pinewood House

This house of the good old time (Magariya) was revived with traditional architectural technique called the Sashikizukuri (carving wood) and has been converted into an Onsen-inn.



Map on last page / D-3

National Registered Tangible Cultural Property 'Magariya'

(Akita Prefectural Agricultural Science Museum) Built in 1900, this southern Magariya style house has a thatched roof and it brings one's mind to way of living back in the old days.



Map on last page / D-3

National Important Cultural Property Koshiou Shrine

Created by Master Jinbee from Hida, the shrine, which is considered to be an exemplar of buildings in the Muramachi period (1333-1573 CE), is characterised by its dynamic architecture and elegant engravings.



Map on last page / D-3

Yakushi Shrine's Sanjusan-kannon

Old pines and 33 Saigoku Nannons are lined up along both sides of the path to the shrine. Legend has it that holy water gushes out between the shrine's flagstones. Until today the shrine remains to be one of the prefecture's holiest places.

The breath of mother nature's woods that are beautiful in all seasons



Mountains that are painted by the trees and transparent streams

Map on last page / D-5

The Magi Gorge and Kawaguchi Gorge

The Kawaguchi Gorge that have several beautiful waterfalls and the Magi Gorge both lead to the peak of Yakushi-oka. The beautiful sceneries there make the locations very popular as hiking courses.

Map on last page / C-5

The Magi White Waterfall

The Magi White Waterfall is a gentle waterfall that is situated next to a road. Waters from several waterfalls merge to form the Magi White Waterfall and falls down into Sainai River. The algae that grows on the wall of the waterfall adds a sense of coolness to the waterfall.



Map on last page / D-5

Kawaguchi Gorge

Map on last page / D-5

Mt. Obu's Giant Cedar

With a 12.4 wide trunk in diameter, the cedar is the widest in the prefecture and is said to be more than a thousand years old. It is ranked amongst the Top 100 of Forest Giants.

Map on last page / D-5

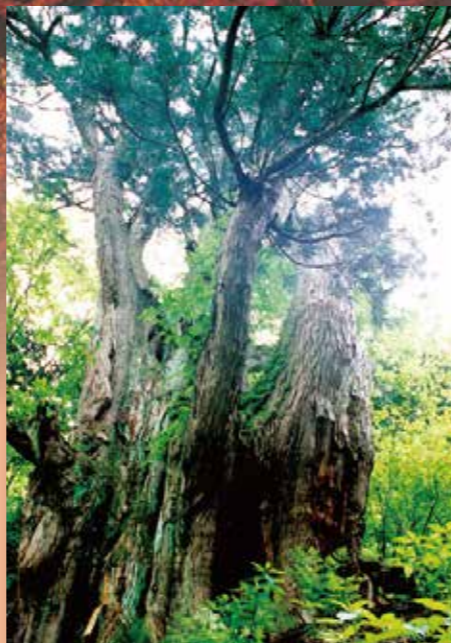
A stroll around the Kawaguchi Gorge



Map on last page / C-5

The Sode-kawa Cliff

The cliff was created by volcanic activities and it looks especially stunning when it is covered in maple foliage.



Map on last page / C-4

ThYotsubashi's Pine Tree

Located in the country area of Ota Kunimi, the pine tree stands alone without anything tall nearby it.



Map on last page / C-5

The Okanezuka's Pine Trees

The pine trees are located near the Kannari Bridge in Nakasen. These pine trees form a uniquely shaped canopy.



Map on last page / D-3

The Giant Zelkova of Houzou Temple

The Giant Zelkova of Houzou Temple is located in Jinguji. The tree is considered to be approx. 950 years old and is ranked number 1 in the prefecture for its size and vigour.



Map on last page / B-1

The Row of Cedar Trees in Karamatsu Shrine

The 160 metre long row of old cedar trees that leads to the Karamatsu shrine is said to be planted by Lord Satake in 1680 and is a prefectural-designated natural monument.

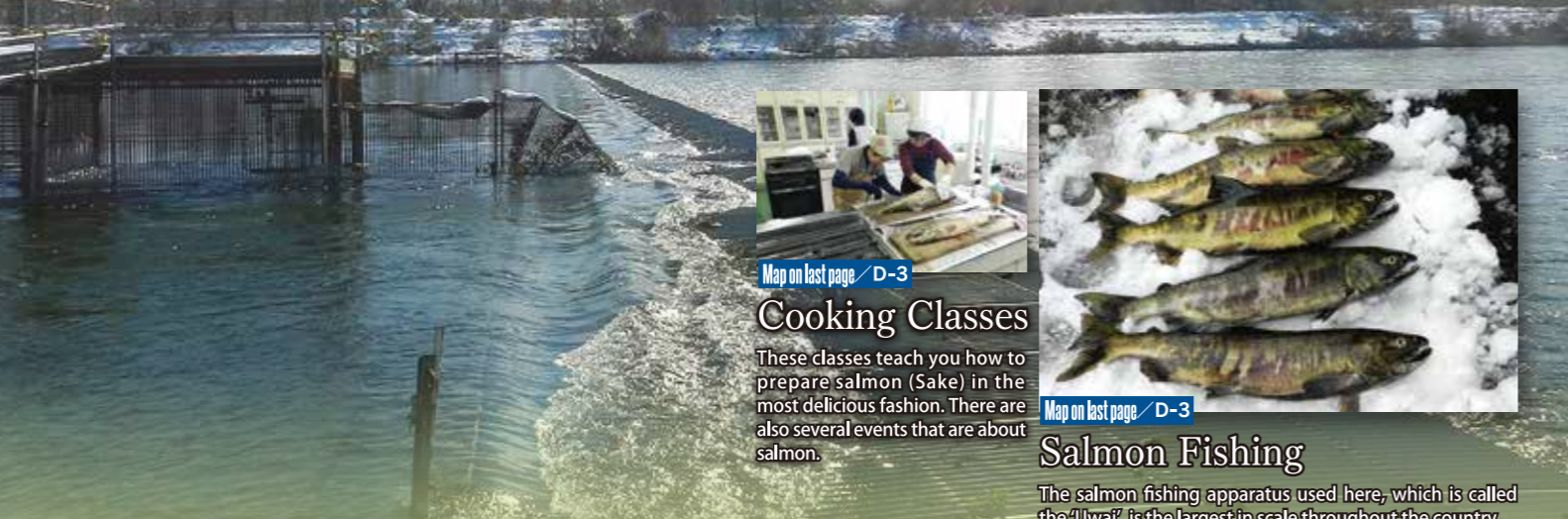


Map on last page / A-2

Utsuno's drooping cherry-trees

These drooping cherry-trees are a type of cherry trees that is called 'Edohigan' and are grown wildly in the mountains.

Around the streams and rivers that moisten Daisen, one can feel the breath of nature and peacefulness



Map on last page / D-3

Cooking Classes

These classes teach you how to prepare salmon (Sake) in the most delicious fashion. There are also several events that are about salmon.



Map on last page / D-3

Salmon Fishing

The salmon fishing apparatus used here, which is called the 'Uwai', is the largest in scale throughout the country.



Map on last page / D-3

Tama River

The Tama River is one of the tributaries of Omono River. The river offers beautiful sceneries in every season.

Map on last page / D-2

Canoeing in the Omono River

The grand Omono River and highly transparent Tama River offer a relaxing canoe experience in the nature.



Be close to the rivers, enjoy the rivers.

Map on last page / C-5

View from Mt. Odai

Pear tree with countryside view in the background. The location is often used to film TV commercials.



Map on last page / D-3

Himegami Park

The park offers a view of the town. From there you can also see the Ou mountains in a distance.



Map on last page / C-3

Sainai River

The souvenir shop 'michi-no-eki Nakasen', combined with Mt. Yaotome, is a well-known location for cherry blossom viewing. There you can take pictures of full-blown sakura together with the Akita Shinkansen in the background!



Map on last page / C-3

Sasakura Park



Map on last page / E-2

Hotaru-no-sato



Map on last page / D-3

Oshizumeshizu



Map on last page / D-3

Mt. HaguroIkoi Forest



Map on last page / D-2

Nangai Fureai Park



Map on last page / E-3

Iida Swamp Fishing Park



Map on last page / D-5

Ota Fureai Sato



Map on last page / D-2

Nagagawara Community Park



Map on last page / C-4

Yokozawa Park



Map on last page / C-4

NishisembokuTakayashiki no Mizu-bashou



Map on last page / D-2

Omagari Family Ski Slope



Map on last page / A-2 Kyowa Ski Slope

Map on last page / C-5 Odai Ski Slope

Local Products

The Deep Blue That is Drawn by Traditional Glaze and Pottery



Map on last page / D-2

Akita Naraoka-style Pottery

This climbing kiln has been used since ancient time, and is still in use to make products. These folk handicrafts are both practical and beautiful, and are characterised by the blue glaze called 'Namakoyu'. The headrests' seat covers of the Green Car sections on the Akita Shinkansen 'Komachi' are dyed with Namakoyou.



Map on last page / C-3



Workers squeezing new brew of sake from unfiltered sake.

Sake Brewery

Daisen City is famous for its sake breweries and has the largest number of breweries in the prefecture. The sake here is brewed using ancient techniques that are passed down from generation to generation and the breweries have a commanding and refined atmosphere.



Omagari Natto-jiru

(Miso soup with fermented soybeans)

Each region and household has their own recipe of the soup, especially the way in which the Natto is grinded. As such, the dish is a truly local and traditional food of this city. (OmagariNatto-jiru) Umemono Research Society www.nattojiru.com



Omagari Curry U-men

(Yummy Ramen)

The Omagari Curry U-men is a well-known local food in the Daisen Omagari region. Served in soya sauce flavoured soup with bonito bouillon, curry roux and finely chopped spring onion, the ramen (Chinese noodles) gives a taste of the good old days.



Simmered Royal Fern Kayaki (in shell)

Zenmai (royal fern), is a type of vegetable that is wildly grown in mountains of this region and can be enjoyed throughout the year.

Daisen Komekko (Rice) Burger

The burger's ingredients such as rice powder, Iburigakko (smoked radish pickles), Tochu pork (the pigs are fed with barks of Tochu- a kind of hardy rubber tree), spring onion and seasonings are all locally made products.



Iburigakko

The Daikon (white radish) is smoked and is then pickled. This kind of pickles is aromatic and has a crunchy texture.

Hot springs

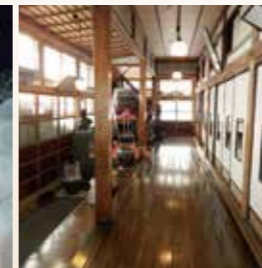
Hidden hot-springs that are surrounded by mountains



Map on last page / C-1

Kowakubi Shouhou-en Inn

The inn is a national tangible cultural property for its architecture. It is also a member of the Nihon Hitouwo Mamoru Society. Kowakubi-268 Kowakubi, Daisen, Akita Prefecture 019-2335 0187-77-2116



Shouhou-en Outdoor Hot-spring

Warmth and Relaxation in hot-springs of Daisen City



Map on last page / C-1

Kowakubi Hotel

This hotel, known as the Dress-inn, has a unique customer service as it is also a photo studio with formal dresses provided for its customers who would like to have dressed-up photo-shoot. Uenodai-28-7 Kowakubi, Daisen, Akita Prefecture 019-2335, Japan 0187-77-2211

Map on last page / C-2

Nishisemboku Nukumori Hot-spring 'Yumeria'

This outdoor hot-spring offer stunning view at twilight. There is also a photo gallery of actor Toshiro Yanagiba.



Yamakitanosawa-5-4 Kariwano, Daisen, Akita Prefecture 019-2112, Japan 0187-87-3100



Hot-Spring Facilities and Others	Telephone no.	Address	Map on last page
Karamatsu Mountain Villa and Hot-spring	TEL.018-893-2211	Tobeiyoshi-91 Miyawafurukko, Daisen, Akita Prefecture 019-2401, Japan	A-2
Kyowa Hot-spring Shiki-no-Yu	TEL.018-893-2615	Shonai-214 Miyawafurukko, Daisen, Akita Prefecture 019-2401, Japan	A-2
Kowakubi Hot-spring 'Omonogawa Kanko Omokansou'	TEL.0187-69-3311	Uenodai Kowakubi, Daisen, Akita Prefecture 019-2335, Japan	C-1
Iwakura Hot-spring (member of Nihon Hinouwo Mamoru Society)	TEL.0187-74-2345	Yumoto-1 Nangai, Daisen, Akita Prefecture 019-1944, Japan	E-2
Yu-no-Kami Hot-spring Shintoukan	TEL.0187-74-2468	Yugamida-72-3 Nangai, Daisen, Akita Prefecture 019-1913, Japan	E-2
Matsukida Hot-spring 'Nangai Furusato Kan'	TEL.0187-74-2310	Matsukida-44-2 Nangai, Daisen, Akita Prefecture 019-1941, Japan	D-2
Kamioka Hot-spring 'Dake-no-yu'	TEL.0187-87-1700	Shitagawaramasabiraki-86-1 Jingyuji, Daisen, Akita Prefecture 019-1701, Japan	D-2
Shiseki-no-satokouryu Plaza 'Saku-no-yu'	TEL.0187-69-3311	Hitosumori-149 Iaminai, Daisen, Akita Prefecture 014-0112, Japan	D-3
Spa Saiyuki	TEL.0187-68-2639	Toni-215-9 Omagarinishine, Daisen, Akita Prefecture 014-0072, Japan	D-3
Nakasato Hot-spring	TEL.0187-88-1471	Aiyashiki-114 Otacho/Nakasato, Daisen, Akita Prefecture 019-1603, Japan	D-4
Kawaguchi Hot-spring 'Ousansou'	TEL.0187-88-1717	Oyachi-10-15 Otachouougou, Daisen, Akita Prefecture, Japan	D-5
Yaotome Hot-spring 'Sakura Sou'	TEL.0187-56-3660	Nagayama-91 Nagano, Daisen, Akita Prefecture 014-0207, Japan	C-3
Daisen City YaotomeKouryu Centre	TEL.0187-56-3870	Nagayama-88 Nagano, Daisen-shi, Akita-ken 014-0207, Japan	C-3



Map on last page / B-2

Remains of Arakawa Mining Site

The former Arakawa Mining Site was discovered in 1700 and was soon opened as 'Naoyama' by the Akita Domain. The site was in rapid development around mid Meiji period and flourished as the country's number one copper mine, but the mine was closed in 1940. The brick walls outside the mine resemble a castle or fortress.



The mine's thickener



Map on last page / C-4

Kashi Dining Hall

A dining hall with a nostalgic atmosphere



Map on last page / A-3

Kyowa dam Miyama Lake

The Kyowa dam is a concrete dam and it offers stunning views in autumn leaf viewing season as you can see the contrast of the dam and the mountains that are covered in red maple leaves.



Map on last page / D-3

View of Sunrise on New Year's Day



When one looks out onto the mountain from the bridge, one will experience calmness and comfort.



Maruko Bridge

Map on last page / D-3

Map on last page / D-3

JR Omagari Train Station



Map on last page / D-3

A ceremonial hall surrounded by mountains

A tranquil chapel with the singing of insects and birds.

Akita Prefectural Agricultural Science Museum



Map on last page / D-3

Fireworks Week



EVENT INFORMATION

Omagari New Talent Music Festival
 Omagari Civic Hall (Omari Hinode-cho) ☎0187-63-8766
 Annually in the beginning of January

Akita Obako-Bushi (folk-song) Contest
 Omagari Civic Hall (Omari Hinode-cho) ☎0187-63-8766
 Annually the beginning of June

Periodical Noh Performance
 Mahoroba-Karamatsu "Nohgakuden" ☎018-892-382
 Annually in the beginning of August

All Akita 500 Years Baseball Tournament
 Kamioka Stadium etc. ☎0187-63-1111
 Annually in late September

Nanbu Chubei's Cup Ground-Golf Tournament
 Ota Fureai-no Sato ☎0187-88-1119
 Annually in September

Akita Ohara-Bushi (folk-song) Contest
 Ota Cultural Center ☎0187-88-1119
 Annually in September

Ou-Ota Road Race
 Ou-Sanso Hotel (Start/Goal) ☎0187-88-1119
 Annually in October

Mt. Kuromori Health Marathon
 Mt. Kuromori Piedmont (Kariwano) ☎0187-75-1115
 Annually on the National Sports Day

Lake Miyama Autumn Festival
 Arakisawa Park (Aza Okawamae, Kyowa-Funaoka) ☎018-892-3706
 Annually in the beginning of October

Japan Jumbo Rabbit Festival
 Donpan Plaza (In front of the Nakasen Branch Office) ☎0187-56-2111
 Annually on the 3rd Sat. and Sun. (Schedule)

Daisen Harvest Festival
 Daisen Area ☎0187-63-1111
 Annually in Late October

Tohoku Shogi (Japanese Chess) Championship
 Omagari Civic Hall (Omari Hinode-cho)
 Annually in the beginning of November

Akita Ameuri-Bushi (folk-song) Contest
 (Kamioka Farm Village Environment Improvement Center) ☎0187-72-2414
 Annually in November

Periodical Noh Performance

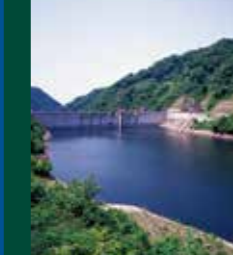


Akita Obako-Bushi (folk-song) Contest



Omagari New Talent Music Festival

Lake Miyama Autumn Festival



Nanbu Chubei's Cup Ground-Golf Tournament



The Mascot Character of Daisen City "Marubi-chan"

Mascot Characters of All Japan Jumbo Bunnies Festival - 'Dekarabi-kun' (right) and 'Dekarabiko-chan' (left)

'DonpanJiccha' - the Ojisan (Grandpa) who lives in Nakasen, the birthplace of the Donpan Festival

Dakemaru-kun - the image character of Daisen City Kamioka-cho, the birthplace of Junior High School Baseball Competitions

Sasara Dance Official Character- 'Sasarata-kun'

Omagari's Fireworks Official Character- 'Tsutsudon to Tama-chan'