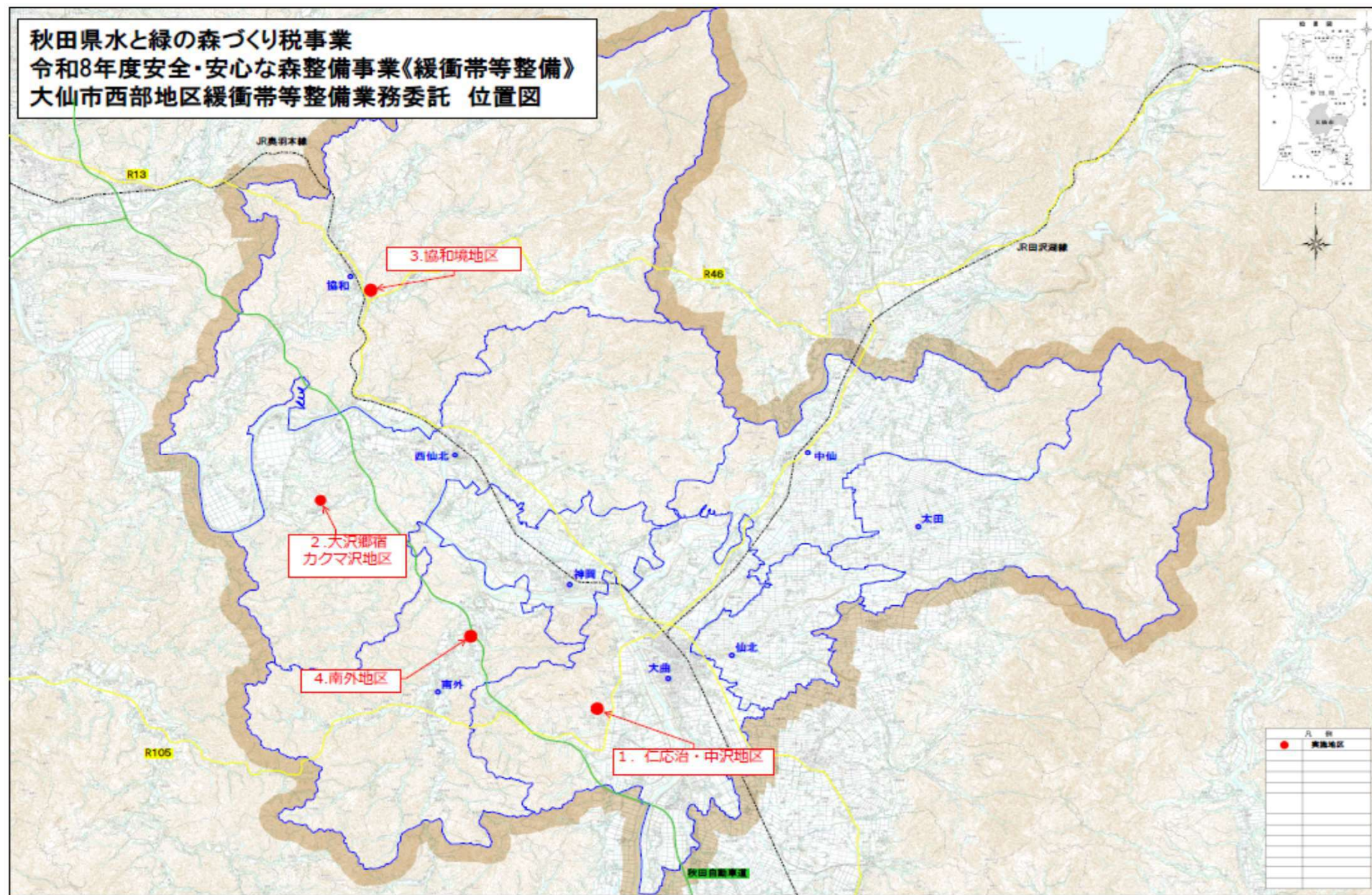
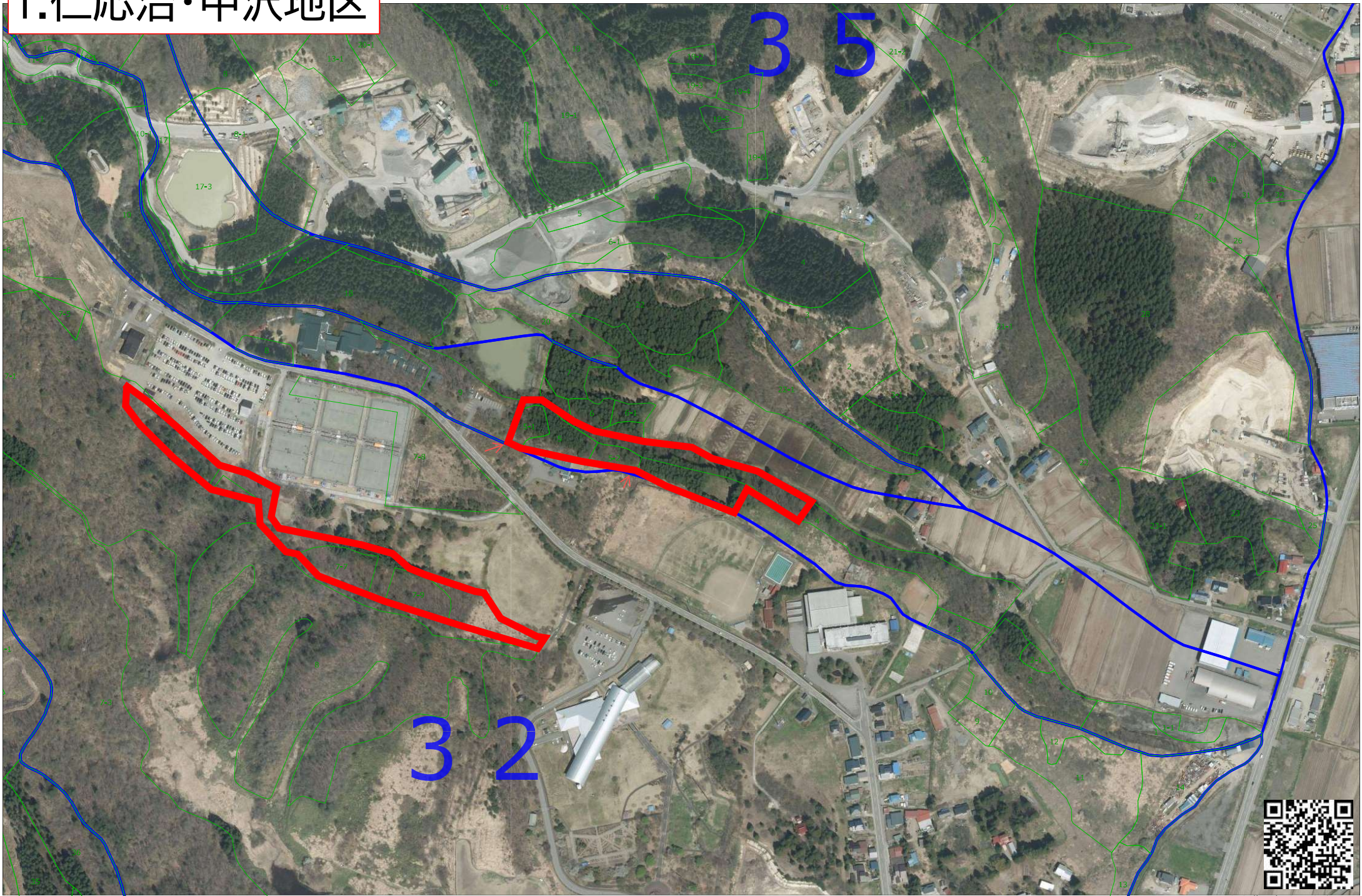


秋田県水と緑の森づくり税事業  
令和8年度安全・安心な森整備事業《緩衝帯等整備》  
大仙市西部地区緩衝帯等整備業務委託 位置図





# 1.仁応治・中沢地区





## 2. 大沢郷カクマ沢地区





This is an aerial photograph of a residential area, overlaid with a cadastral map. A prominent red boundary line outlines a specific area of interest. The map includes numerous labels for land parcels, roads, and other features. A north arrow is located in the top right corner.

**Key Features and Labels:**

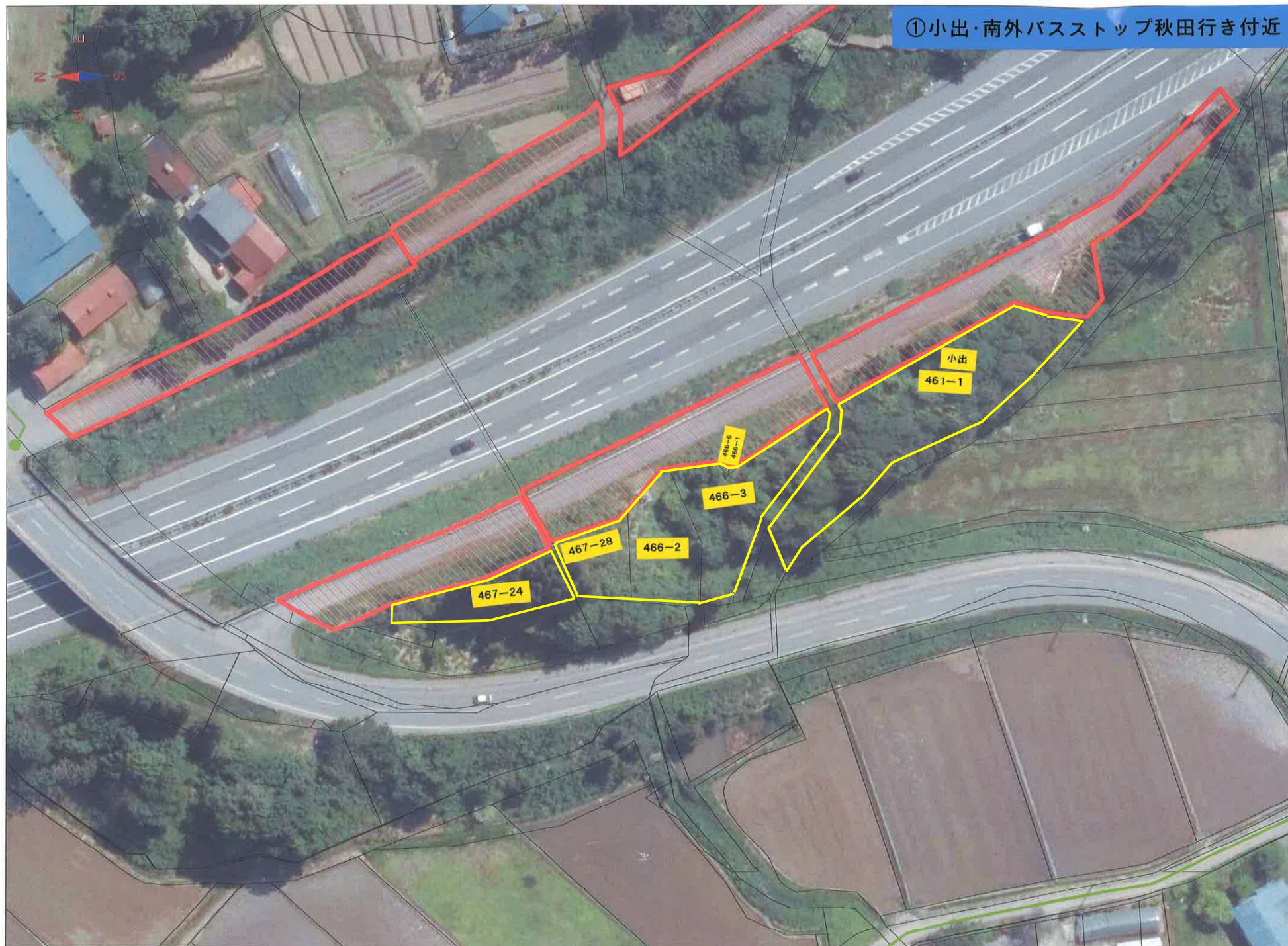
- Red Boundary:** A large, irregular red line outlines a central area that includes a large building complex, a parking lot, and several smaller structures.
- Parcel Numbers:** Various numbers are scattered across the map, such as 37, 39, 40, 41, 42, 43, 44-1, 45, 46, 47, 48, 49, 50, 51, 52, 53, 54, 55, 56, 57-1, 58, 59-6, 60-1, 61, 62, 63, 64, 65, 66, 67, 68, 69, 70, 71, 72, 73, 74-3, 74-4, 75, 76, 77-3, 78, 79, 80, 81, 82, 83, 84, 85, 86-1, 87, 88, 89, 90, 91, 92, 93, 94, 95, 96-2, 96-3, 96-6, 97, 98, 99, 100, 101, 102, 103, 104, 105, 106-1, 106-2, 107, 108, 109, 110, 111, 112, 113, 114, 115, 116, 117, 118-4, 118-6, 119, 120, 121, 122, 123, 124, 125, 126, 127, 128, 129, 130, 131, 132, 133, 134, 135, 136, 137, 138, 139, 140, 141, 142, 143, 144, 145, 146, 147, 148, 149, 150, 151, 152, 153, 154, 155, 156, 157, 158, 159, 160, 161, 162, 163, 164, 165, 166, 167, 168, 169, 170, 171, 172, 173, 174, 175, 176, 177, 178, 179, 180, 181, 182, 183, 184, 185, 186, 187, 188, 189, 190, 191, 192, 193, 194, 195, 196, 197, 198, 199, 200.
- Roads:** Labeled roads include 道-34, 道-37, 道-38, 道-39, 道-40, 道-41, 道-42, 道-43, 道-44, 道-45, 道-46, 道-47, 道-48, 道-49, 道-50, 道-51, 道-52, 道-53, 道-54, 道-55, 道-56, 道-57, 道-58, 道-59, 道-60, 道-61, 道-62, 道-63, 道-64, 道-65, 道-66, 道-67, 道-68, 道-69, 道-70, 道-71, 道-72, 道-73, 道-74, 道-75, 道-76, 道-77, 道-78, 道-79, 道-80, 道-81, 道-82, 道-83, 道-84, 道-85, 道-86, 道-87, 道-88, 道-89, 道-90, 道-91, 道-92, 道-93, 道-94, 道-95, 道-96, 道-97, 道-98, 道-99, 道-100.
- Other Labels:** 筆界未定地-5, 筆界未定地-3, 筆界未定地-7, 筆界未定地-1, 筆界未定地-2, 筆界未定地-3, 筆界未定地-4, 筆界未定地-5, 筆界未定地-6, 筆界未定地-7, 筆界未定地-8, 筆界未定地-9, 筆界未定地-10, 筆界未定地-11, 筆界未定地-12, 筆界未定地-13, 筆界未定地-14, 筆界未定地-15, 筆界未定地-16, 筆界未定地-17, 筆界未定地-18, 筆界未定地-19, 筆界未定地-20, 筆界未定地-21, 筆界未定地-22, 筆界未定地-23, 筆界未定地-24, 筆界未定地-25, 筆界未定地-26, 筆界未定地-27, 筆界未定地-28, 筆界未定地-29, 筆界未定地-30, 筆界未定地-31, 筆界未定地-32, 筆界未定地-33, 筆界未定地-34, 筆界未定地-35, 筆界未定地-36, 筆界未定地-37, 筆界未定地-38, 筆界未定地-39, 筆界未定地-40, 筆界未定地-41, 筆界未定地-42, 筆界未定地-43, 筆界未定地-44, 筆界未定地-45, 筆界未定地-46, 筆界未定地-47, 筆界未定地-48, 筆界未定地-49, 筆界未定地-50, 筆界未定地-51, 筆界未定地-52, 筆界未定地-53, 筆界未定地-54, 筆界未定地-55, 筆界未定地-56, 筆界未定地-57, 筆界未定地-58, 筆界未定地-59, 筆界未定地-60, 筆界未定地-61, 筆界未定地-62, 筆界未定地-63, 筆界未定地-64, 筆界未定地-65, 筆界未定地-66, 筆界未定地-67, 筆界未定地-68, 筆界未定地-69, 筆界未定地-70, 筆界未定地-71, 筆界未定地-72, 筆界未定地-73, 筆界未定地-74, 筆界未定地-75, 筆界未定地-76, 筆界未定地-77, 筆界未定地-78, 筆界未定地-79, 筆界未定地-80, 筆界未定地-81, 筆界未定地-82, 筆界未定地-83, 筆界未定地-84, 筆界未定地-85, 筆界未定地-86, 筆界未定地-87, 筆界未定地-88, 筆界未定地-89, 筆界未定地-90, 筆界未定地-91, 筆界未定地-92, 筆界未定地-93, 筆界未定地-94, 筆界未定地-95, 筆界未定地-96, 筆界未定地-97, 筆界未定地-98, 筆界未定地-99, 筆界未定地-100.







①小出・南外バスストップ秋田行き付近

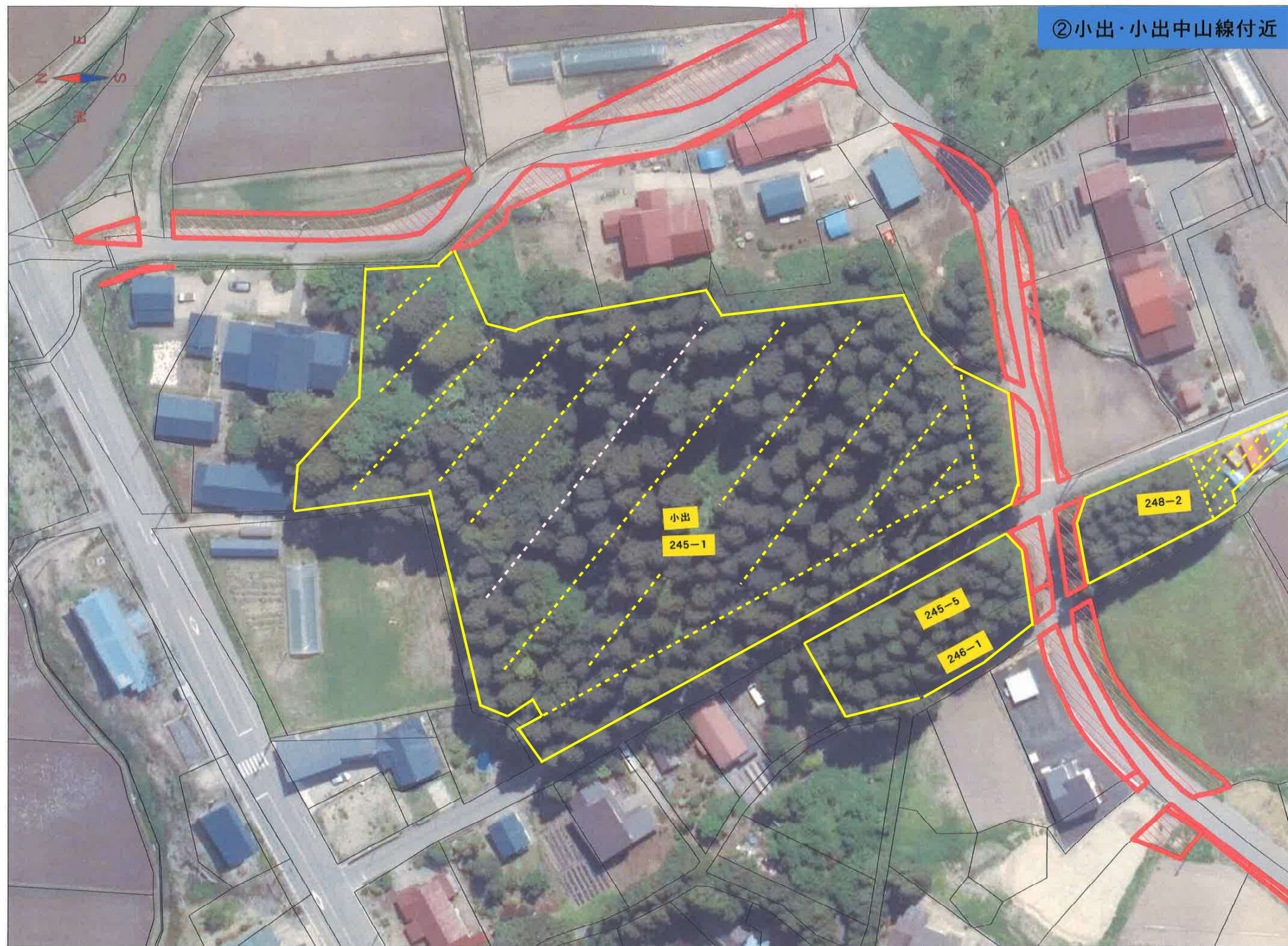


0 10 50m

1/1000



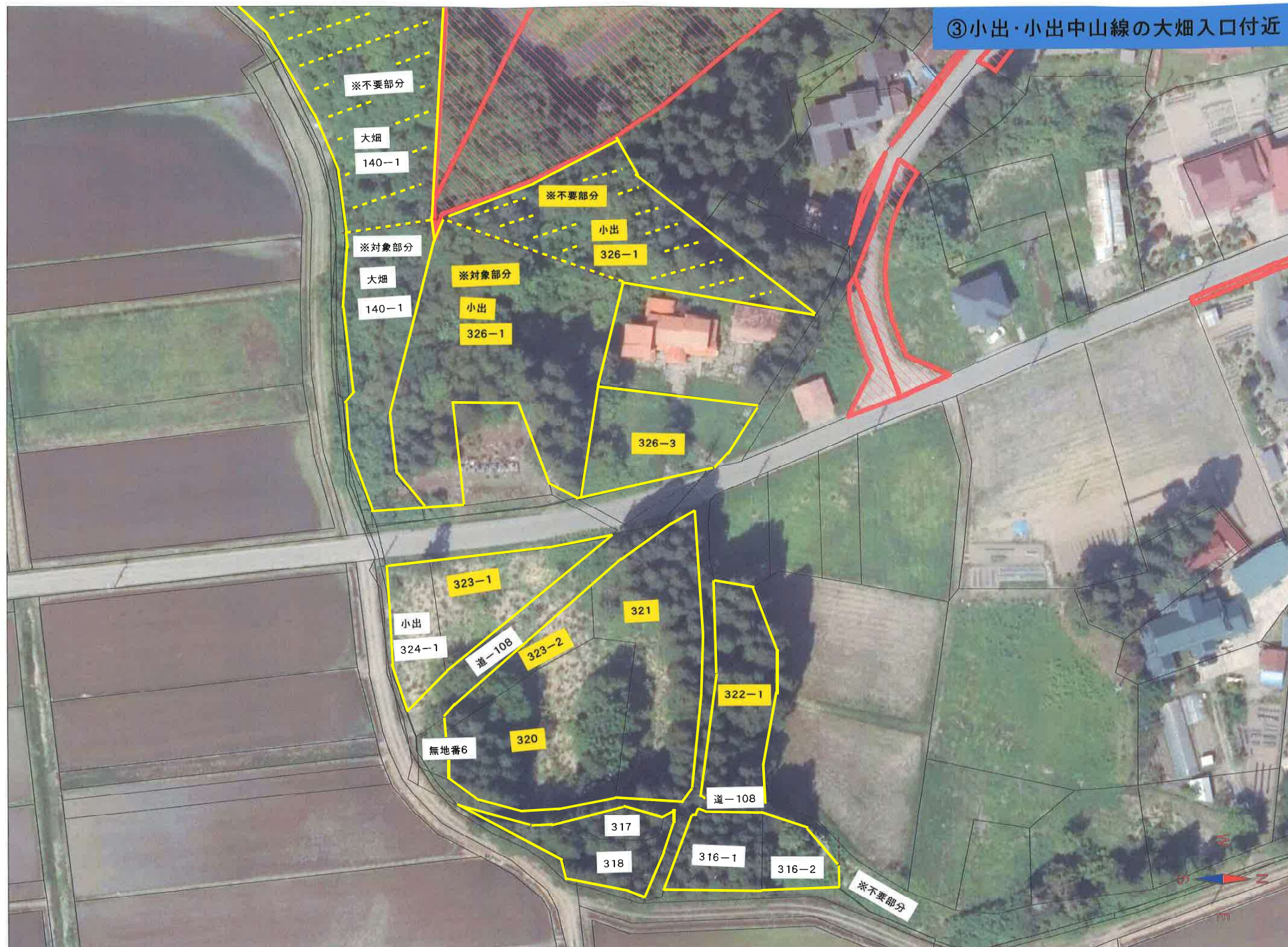
②小出・小出中山線付近



0 10 50m

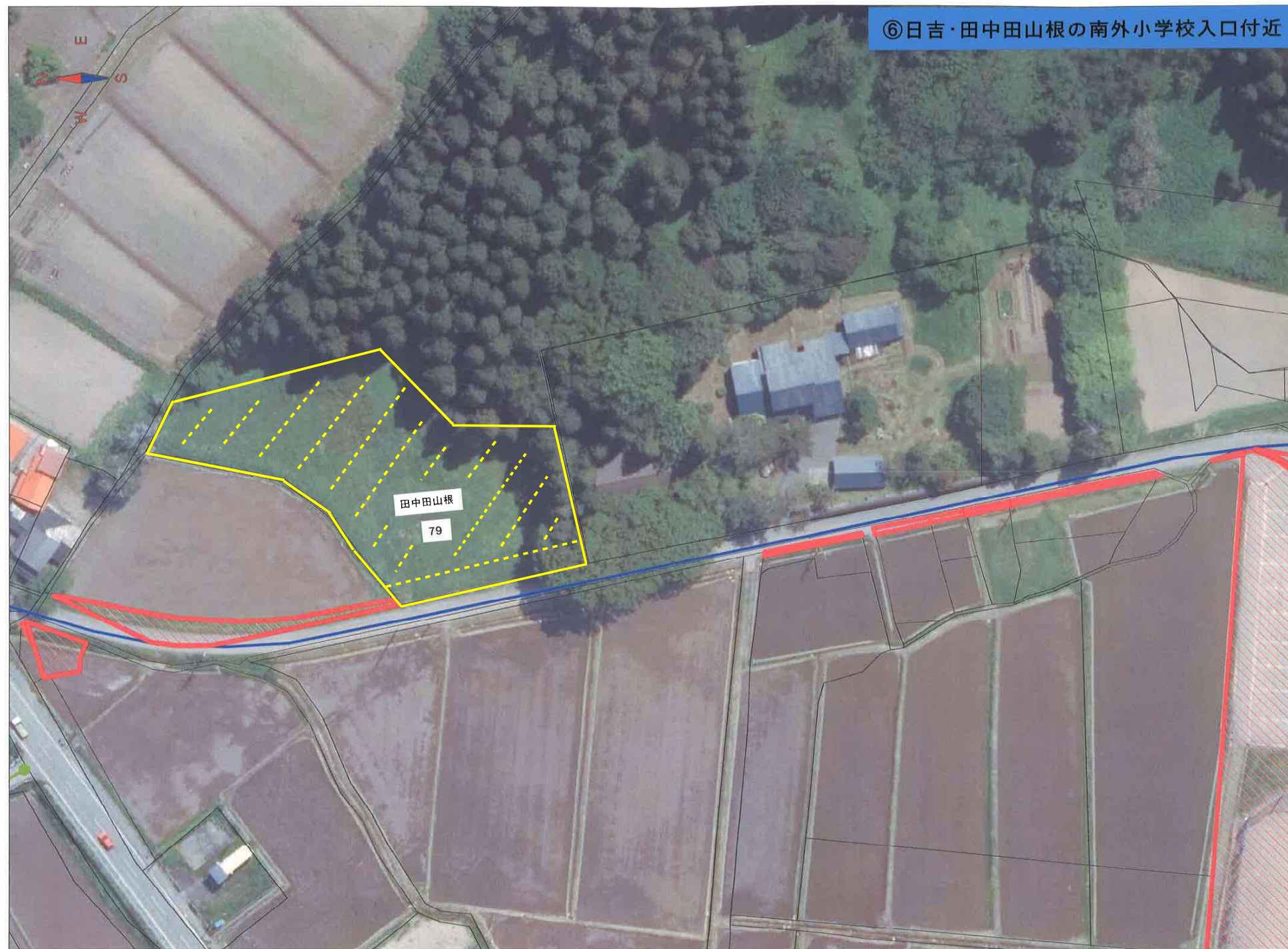
1/1000







⑥日吉・田中田山根の南外小学校入口付近



0 10 50m

1/1000